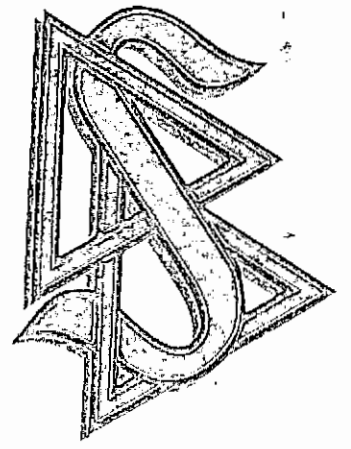
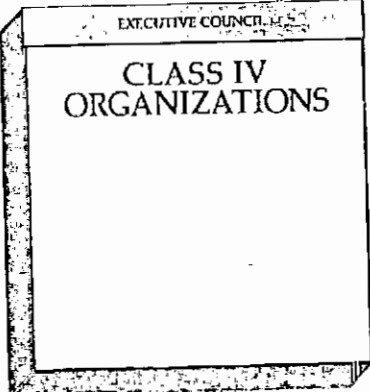
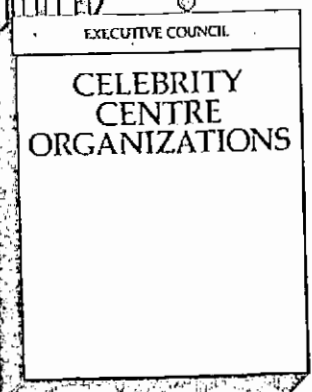
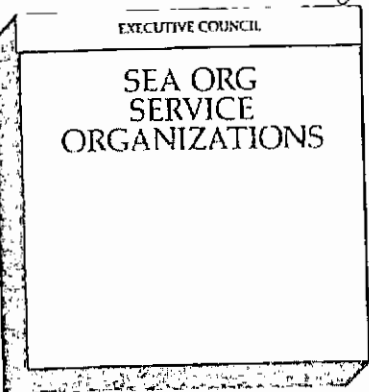
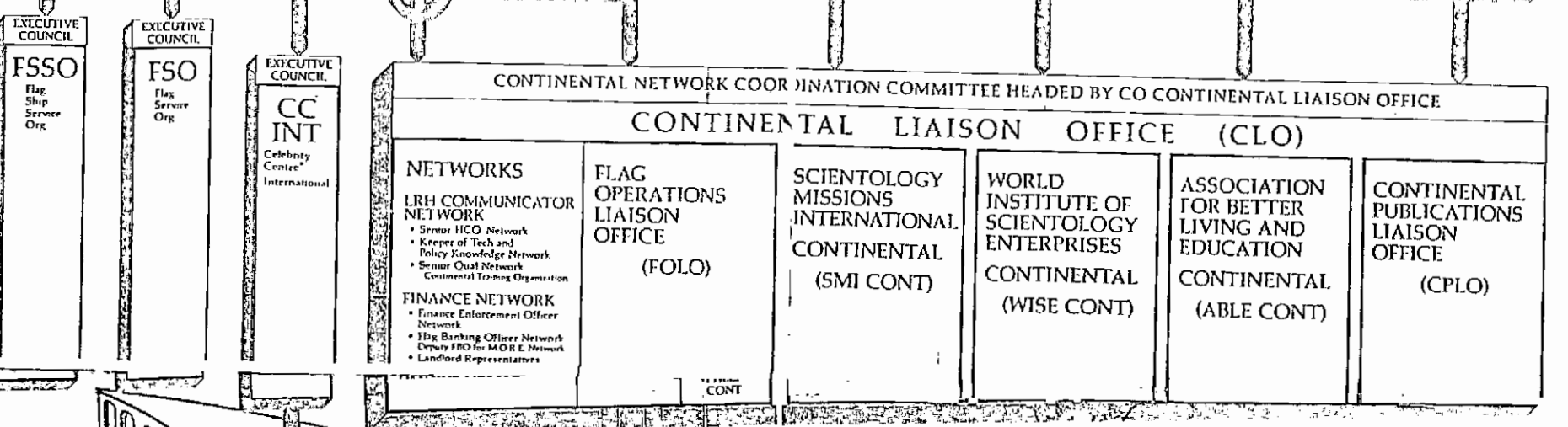
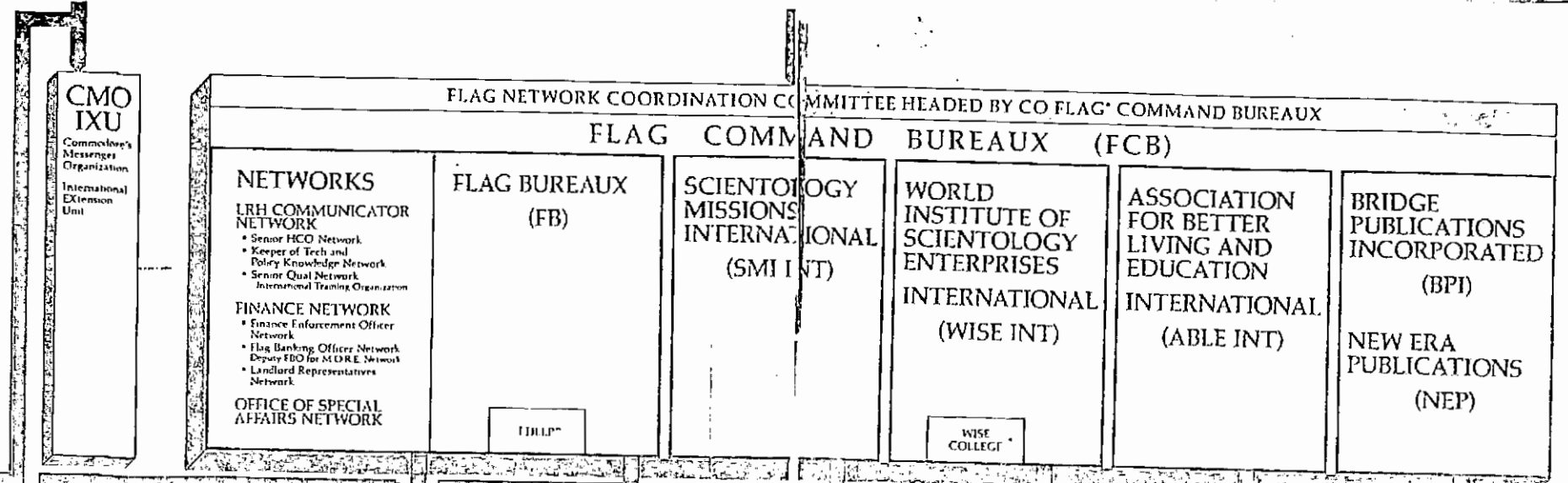
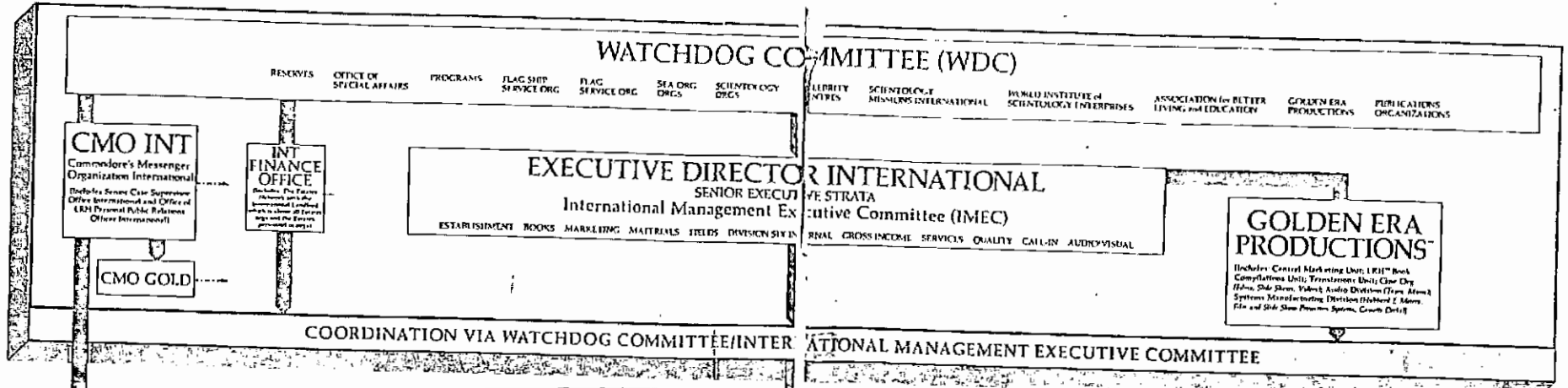


The Command Chart of SCIENTOLOGY



RELIGIOUS TECHNOLOGY CENTER (RTC)
INSPECTOR GENERAL NETWORK
(Includes: Authorization, Verification and Correction International)

CENTRAL COMPUTER BANK



The hundreds of ORGS, MISSIONS, DIANETICS COUNSELING GROUPS, CITY OFFICES, FIELD AUDITORS, WISE UNITS and SOCIAL REFORM GROUPS, operating on LRH policy and dedicated to delivering LRH technology to the public, are the heart of International Scientology. All management units exist solely to ensure their future and ever-expanding prosperity through the standard application of LRH Technology and Policy.

"THE ONLY REASON ORGS EXIST IS TO SPILL AND DELIVER MATERIALS AND SERVICE TO THE PUBLIC AND GET IN PUBLIC TO SELL AND DELIVER TO THE OBJECT IS TOTALLY

MISSIONS TABLE SOCIAL

The Class IV Organization and its Valuable Final Products

BOARD OF DIRECTORS

EXECUTIVE DIRECTOR

D/ED FOR DELIVERY AND EXCHANGE

HCO

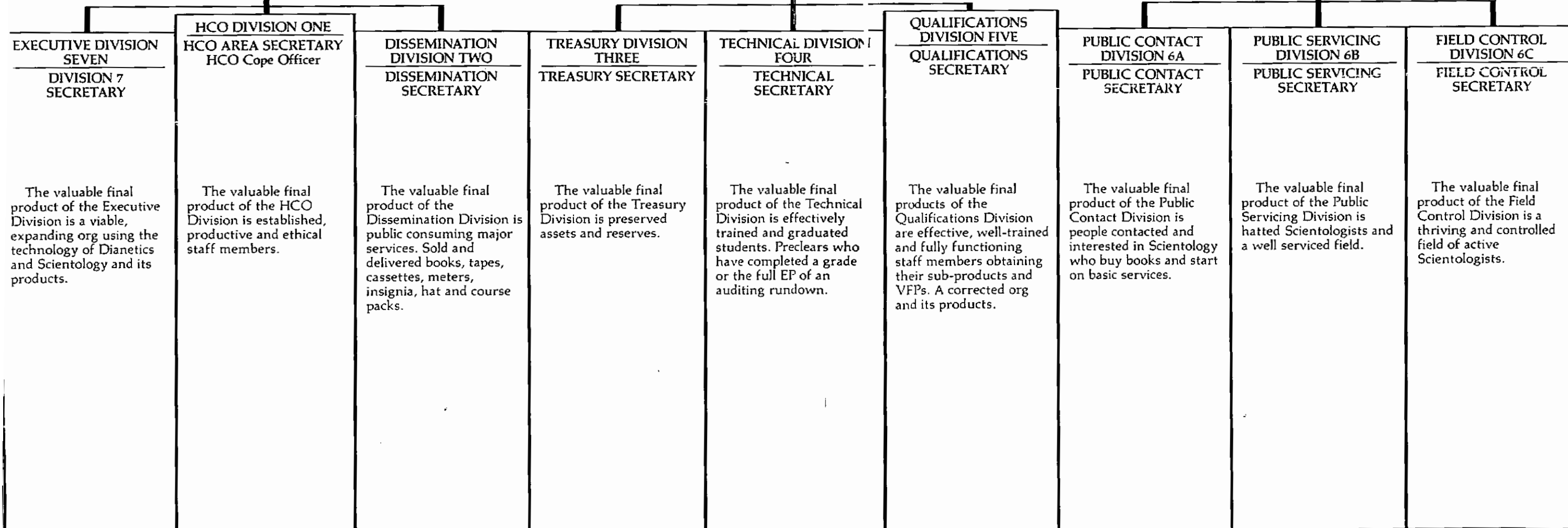
ORG

PUBLIC

HCO EXECUTIVE SECRETARY

ORGANIZATION EXECUTIVE SECRETARY

PUBLIC EXECUTIVE SECRETARY



The Org Valuable Final Product is FINE PEOPLE WHO PRODUCE VALUABLE FINAL PRODUCTS WHO THEN MAKE UP A VALUABLE FINE PUBLIC.