



Director's Update Brief

Monday

25 May 2009 1100 EDT

Day 37

The Week of CDC Workforce



Key Events

US Novel Influenza A (H1N1)



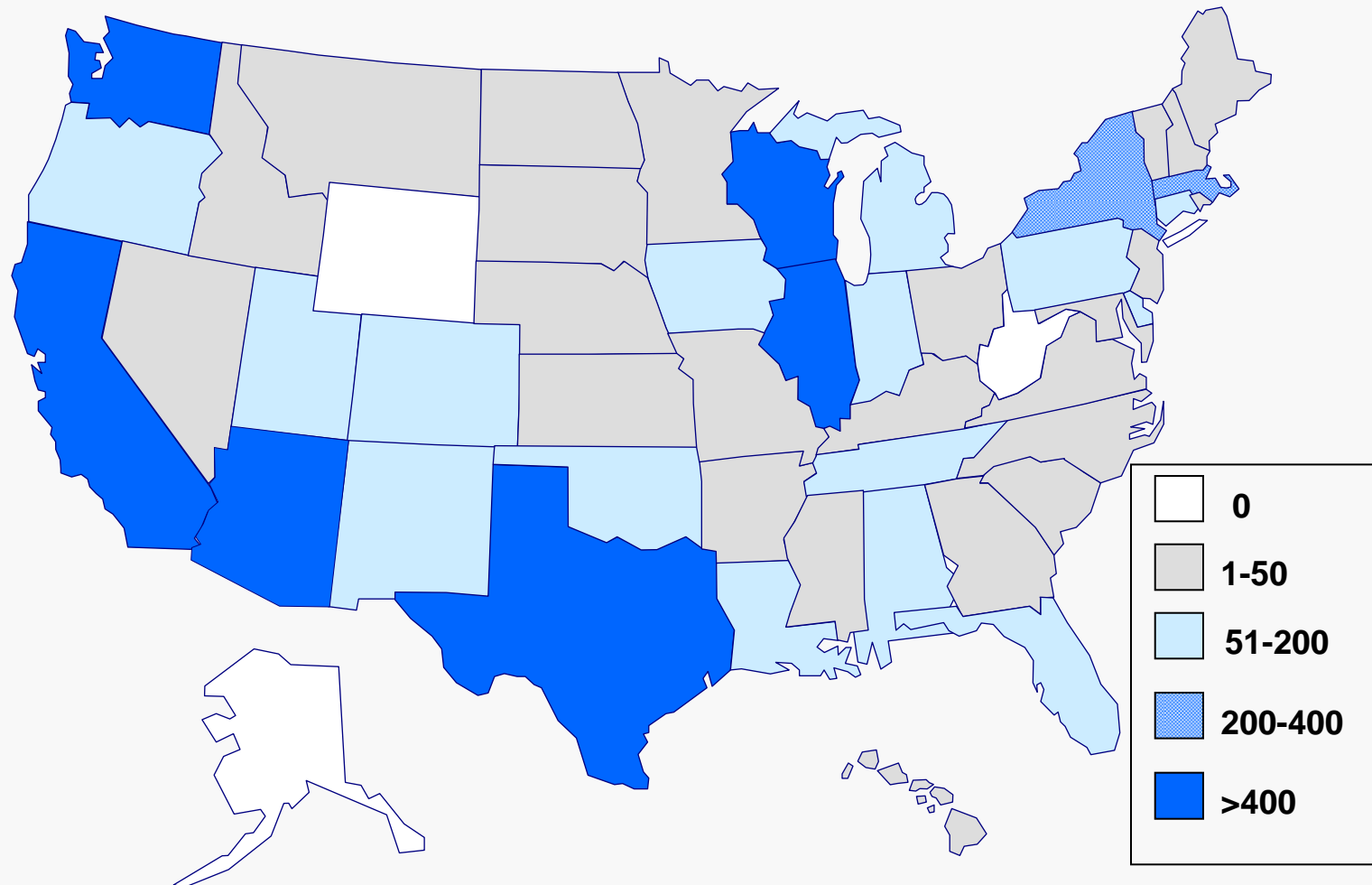
- Novel Influenza A (H1N1) Declarations
 - HHS: Downgraded to Phase 1 – Awareness (9 May 2009)
 - WHO: Pandemic Phase 5 (29 Apr 1600 EDT)
 - USG: Public Health Emergency declared (26 Apr 2009)
- **US Cases: As of 22 May 2009 0840 EDT**

	Total Confirmed and Probable		
	Cases	Hosp	Deaths
US TOTAL Cases INCL DC	6764	317	10
US TOTAL States Affected INCL DC	48	36	6

- International Cases: 12,022 in 43 Countries
 - New countries with confirmed cases: Russia
- Deployments: 26 deployed, 8 pending, 202 potential



Epidemiology/Surveillance Number of Novel Influenza A (H1N1)
Cases Reported to CDC by State
As of 22 May 2009 0840 EDT (n=6,764)

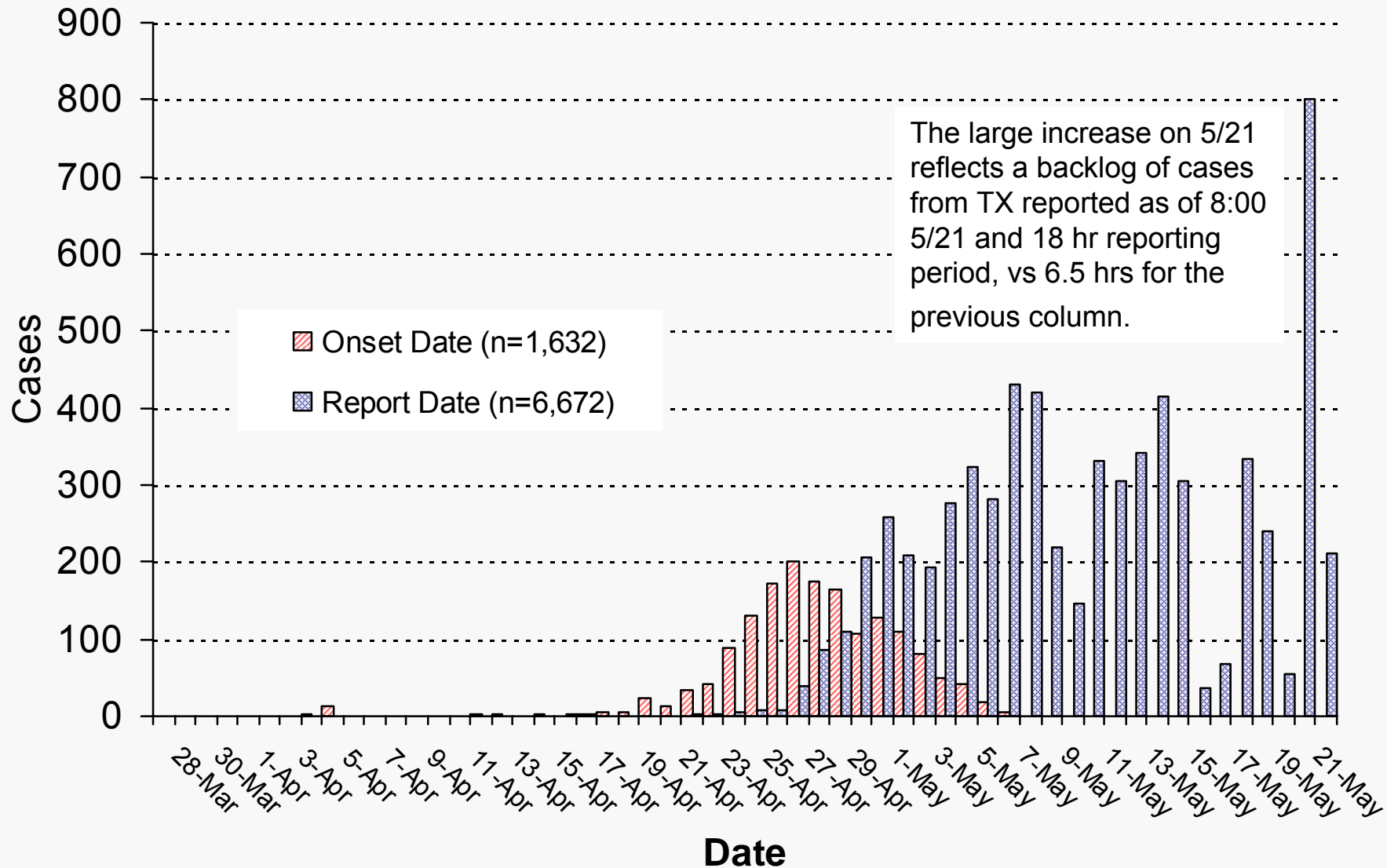




Epidemiology/Surveillance

Novel Influenza A (H1N1) - 25 May 2009 1100 EDT

Confirmed and Probable Cases by Onset* and Report Date



*Information on onset date no longer presented after May 12 due to change to aggregate reporting



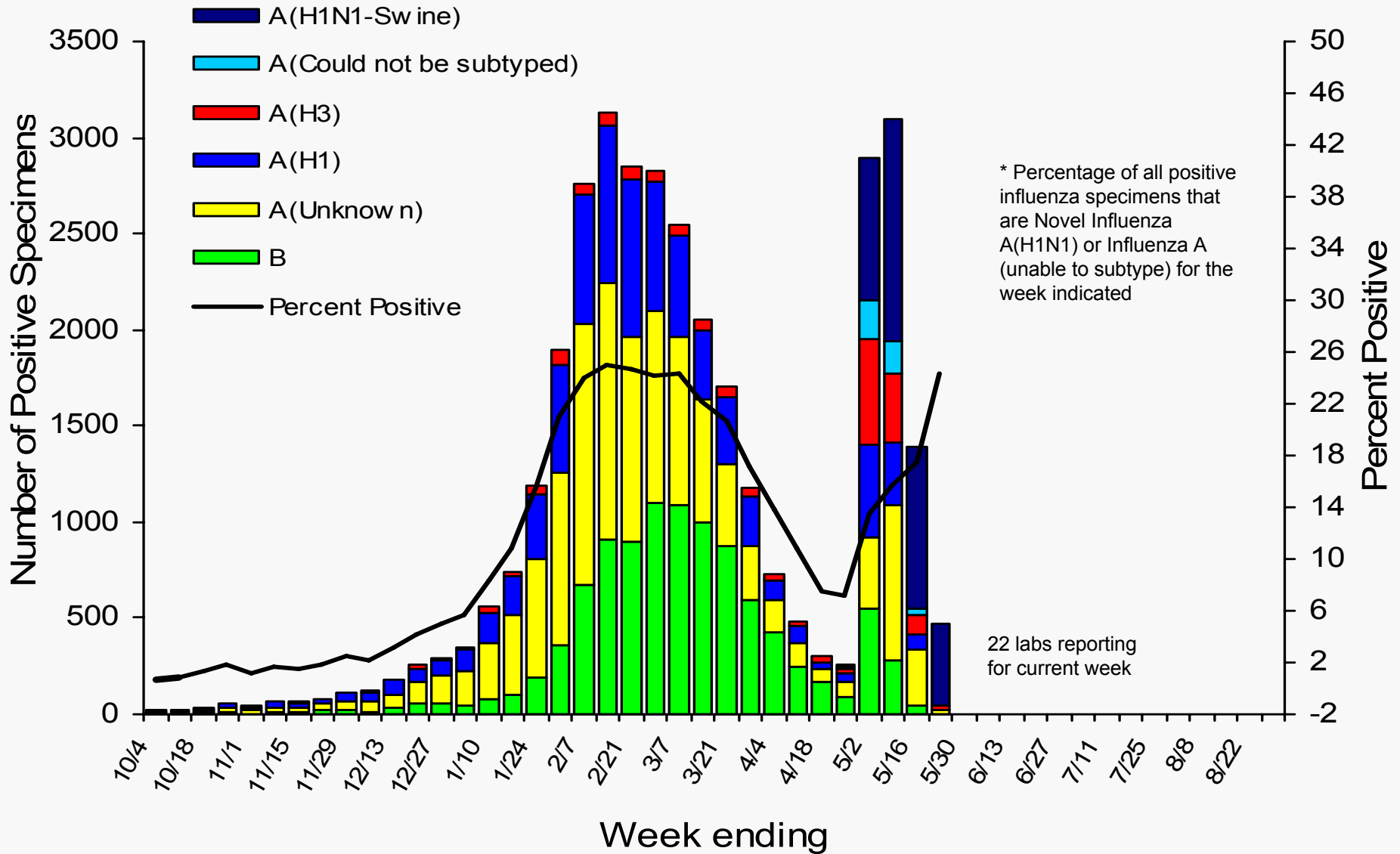
- **WHO/NREVSS Collaborating Laboratories**
 - Seasonal influenza A (H1), A (H3), and B viruses co-circulated with novel influenza A (H1N1) viruses
- **Influenza-associated Pediatric Deaths**
 - No new influenza-associated pediatric deaths reported. 08-09 total = 61
- **ILINet (week ending 16 May)**
 - % of ILI outpatient visits ↓ the national baseline; overall trend remains stable
- **122 Cities Mortality Reporting System (graph)**
 - % pneumonia and influenza deaths remains within expected
 - % deaths due to pneumonia and influenza are decreasing
- **Geographic Spread of Influenza as Assessed by State and Territorial Epidemiologists – state reporting:**
 - Widespread: 5 states Regional: 13 states
 - Local: 15 states + DC Sporadic: 16 states None: 1 state



Epidemiology/Surveillance

Novel Influenza A (H1N1) - 25 May 2009 1100 EDT

U.S. WHO/NREVSS Collaborating Laboratories Summary, 2008-09

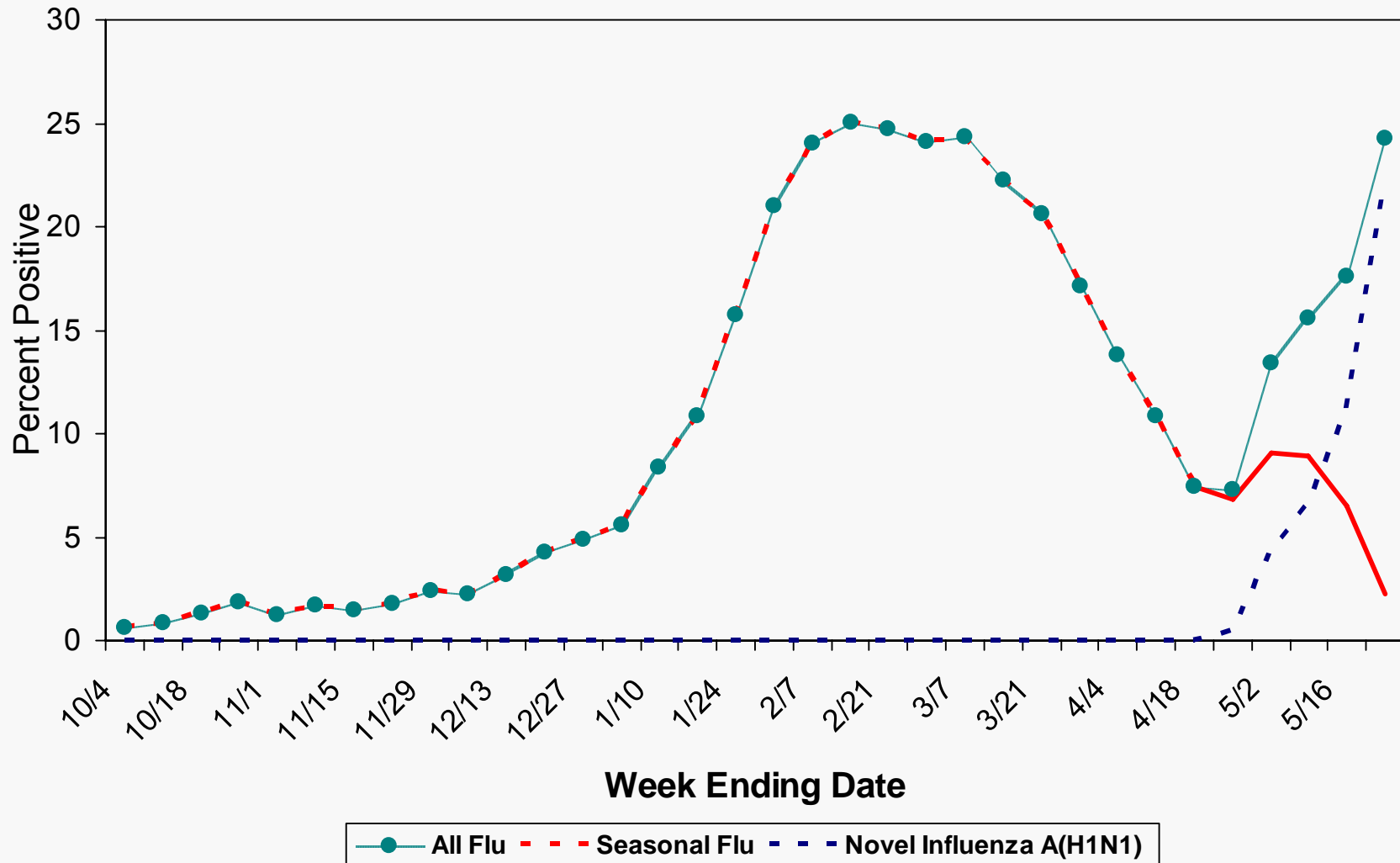




Epidemiology/Surveillance

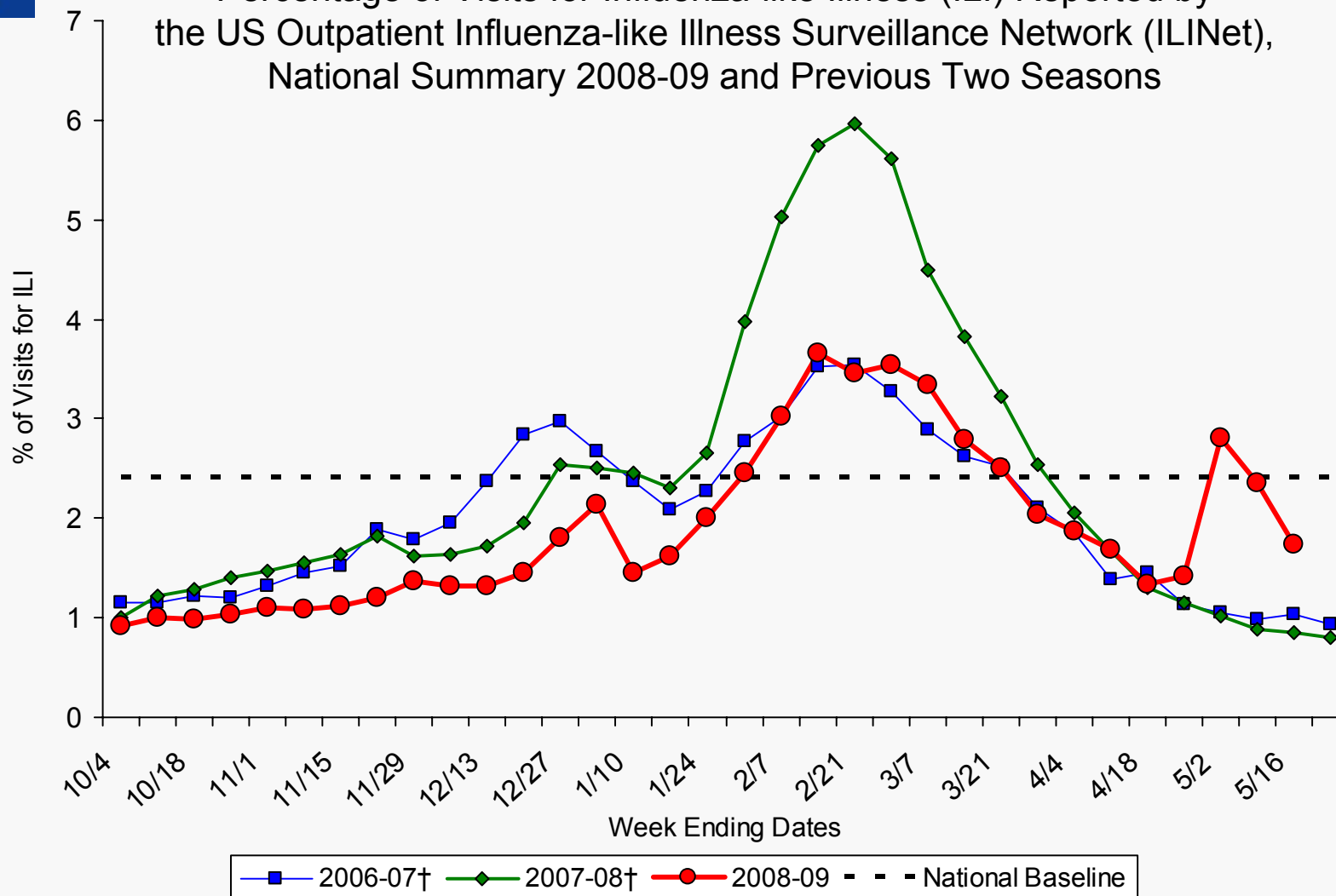
Novel Influenza A (H1N1) - 25 May 2009 1100 EDT

Percent of Specimens Positive for Influenza Reported by WHO and NREVSS
Labs: Novel Influenza A(H1N1) vs. Seasonal Influenza, by Week





Epidemiology/Surveillance
Novel Influenza A (H1N1) - 25 May 2009 0100 EDT
Percentage of Visits for Influenza-like Illness (ILI) Reported by
the US Outpatient Influenza-like Illness Surveillance Network (ILINet),
National Summary 2008-09 and Previous Two Seasons



NOTE: Week ending dates vary by influenza season

*Preliminary ILI data for week 19, as of May 22, 2009 (n=950 weekly ILI reports received from 49 states)

† There was no week 53 during the 2006-07 and 2007-08 seasons, therefore the week 53 data point for those seasons is an average of weeks 52 and 1.



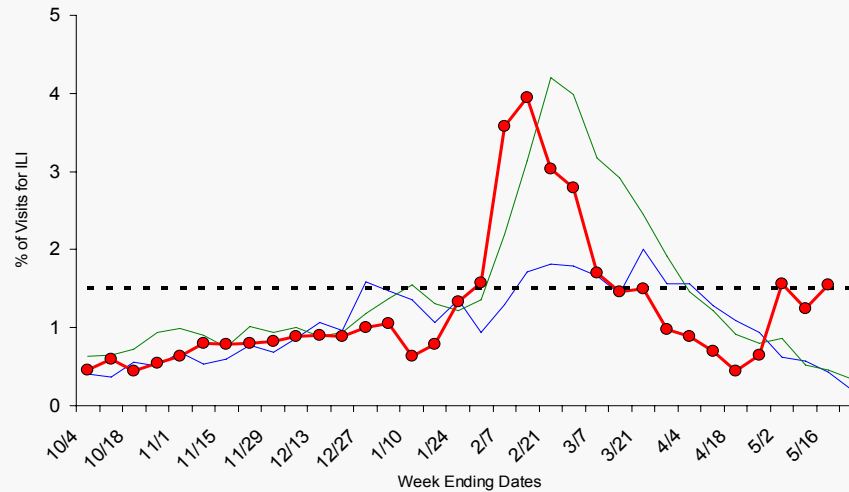
Epidemiology/Surveillance

Novel Influenza A (H1N1) - 25 May 2009 1100 EDT

Current Influenza Surveillance – ILINet Regions I-III

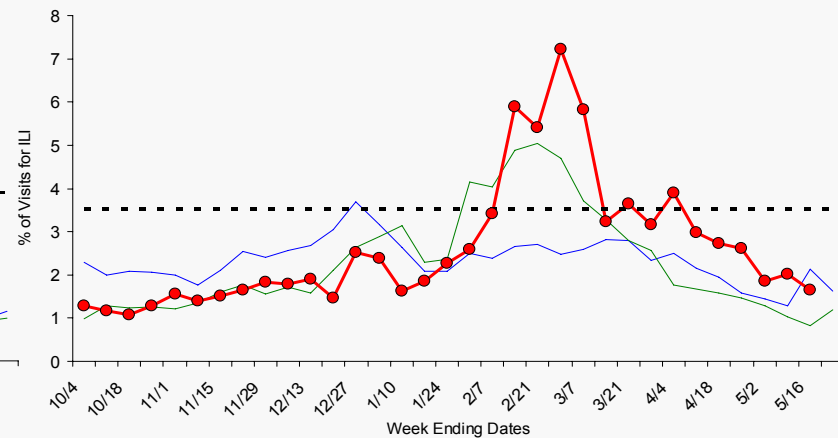
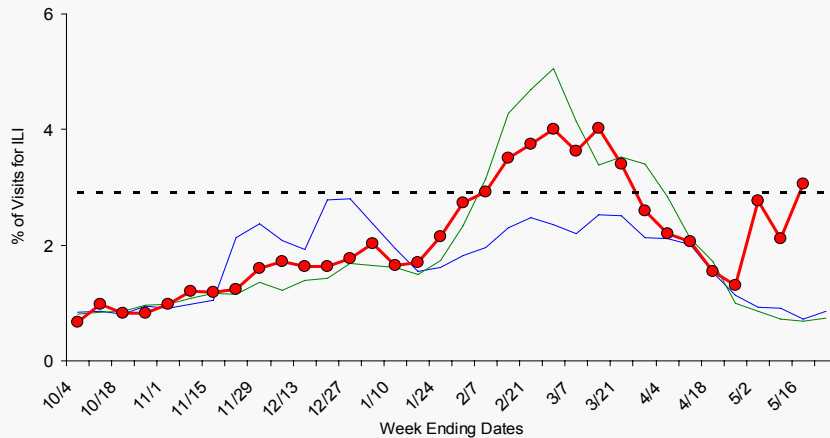


Region I - CT, ME, MA, NH, RI, VT



Region II - NJ, NY

Region III - DE, DC, MD, PA, VA, WV



NOTE: Scales differ between regions

NOTE: There was no week 53 during the 2006-07 and 2007-08 seasons, therefore the week 53 data point for those seasons is an average of weeks 52 and 1.



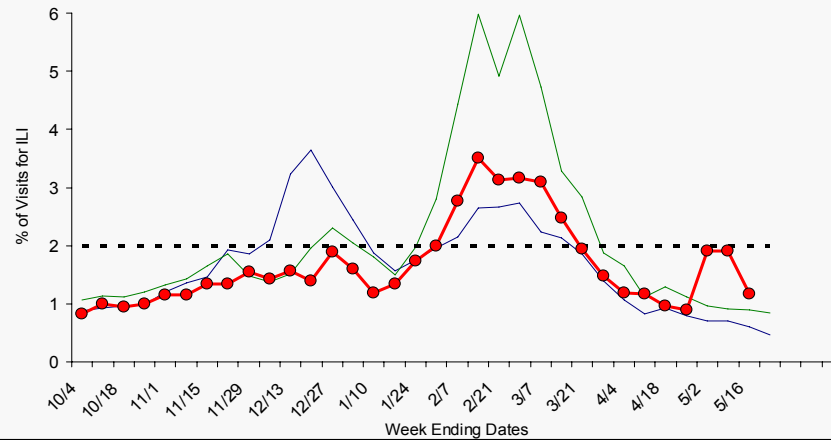
Epidemiology/Surveillance

Novel Influenza A (H1N1) - 25 May 2009 1100 EDT

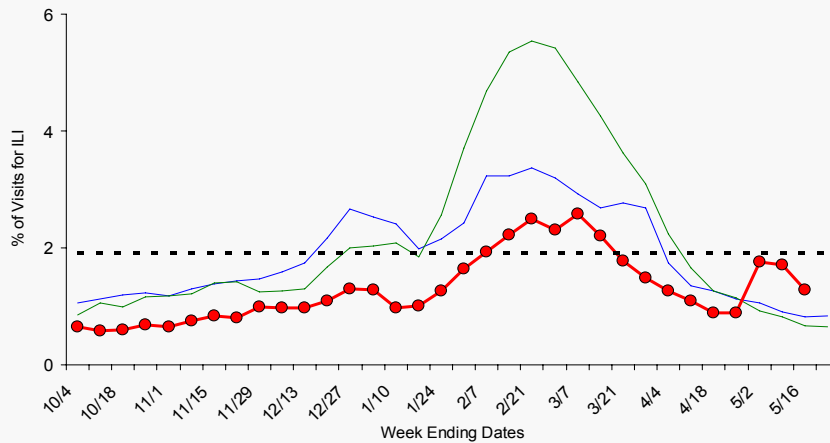
Current Influenza Surveillance – ILINet Regions IV-VI



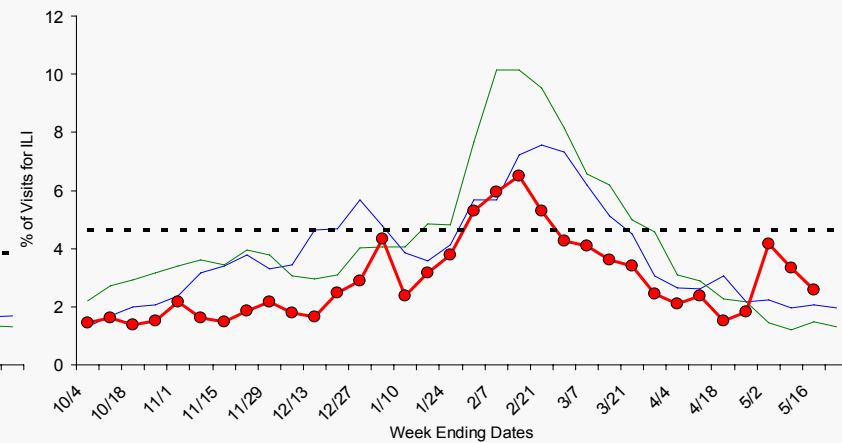
Region IV - AL, FL, GA, KY, MS, NC, SC, TN



Region V - IL, IN, MI, MN, OH, WI



Region VI - AR, LA, NM, OK, TX



NOTE: Scales differ between regions

NOTE: There was no week 53 during the 2006-07 and 2007-08 seasons, therefore the week 53 data point for those seasons is an average of weeks 52 and 1.



Epidemiology/Surveillance

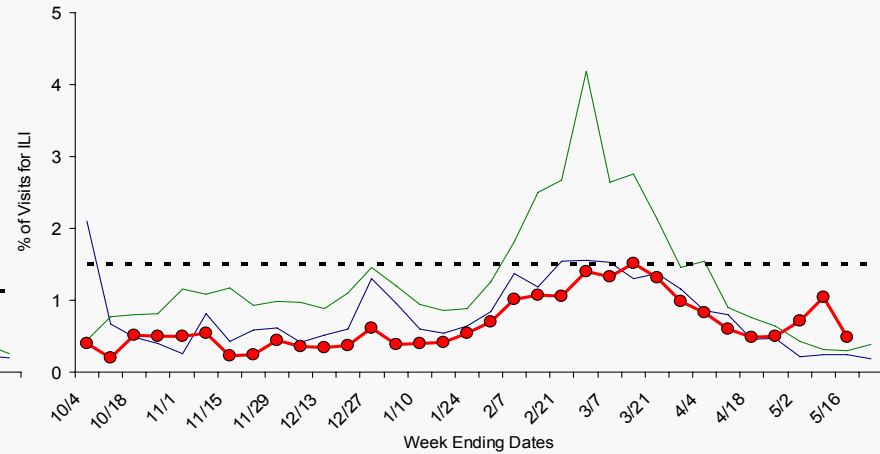
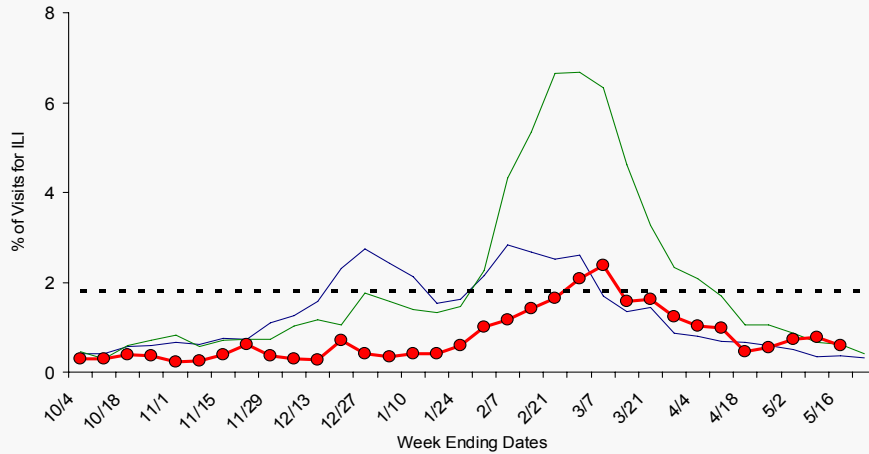
Novel Influenza A (H1N1) - 25 May 2009 1100 EDT

Current Influenza Surveillance – ILINet Regions VII-X



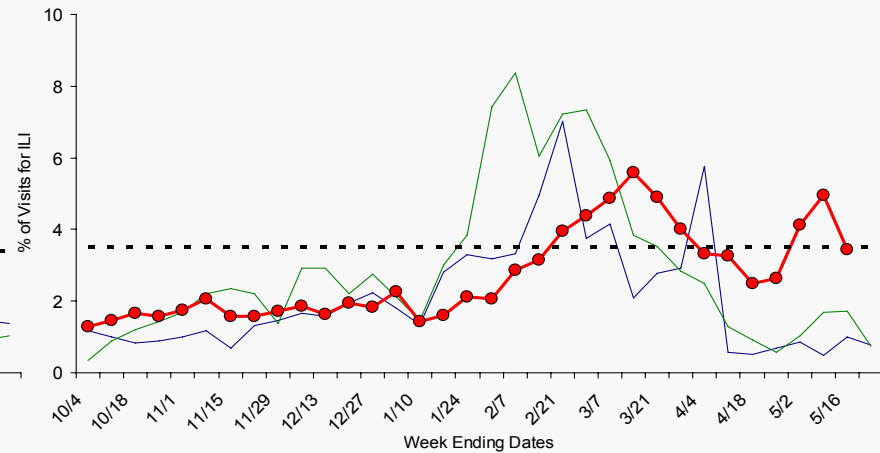
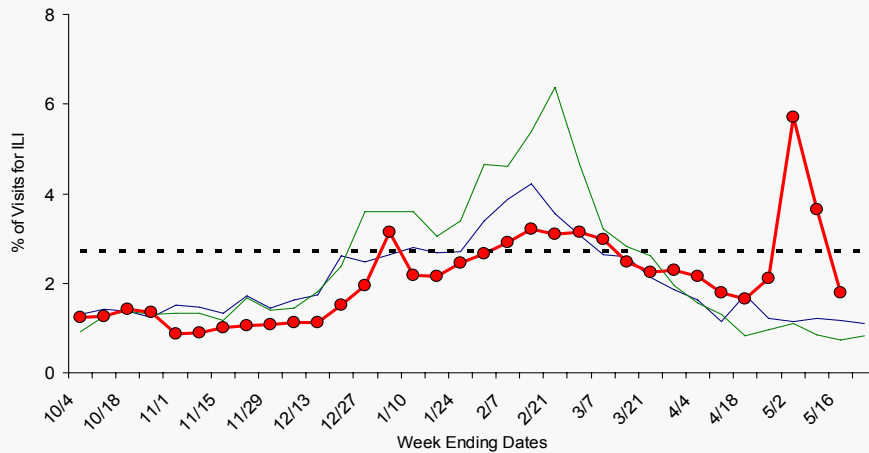
Region VII - IA, KS, MO, NE

Region VIII - CO, MT, ND, SD, UT, WY



Region IX - AZ, CA, HI, NV

Region X - AK, ID, OR, WA

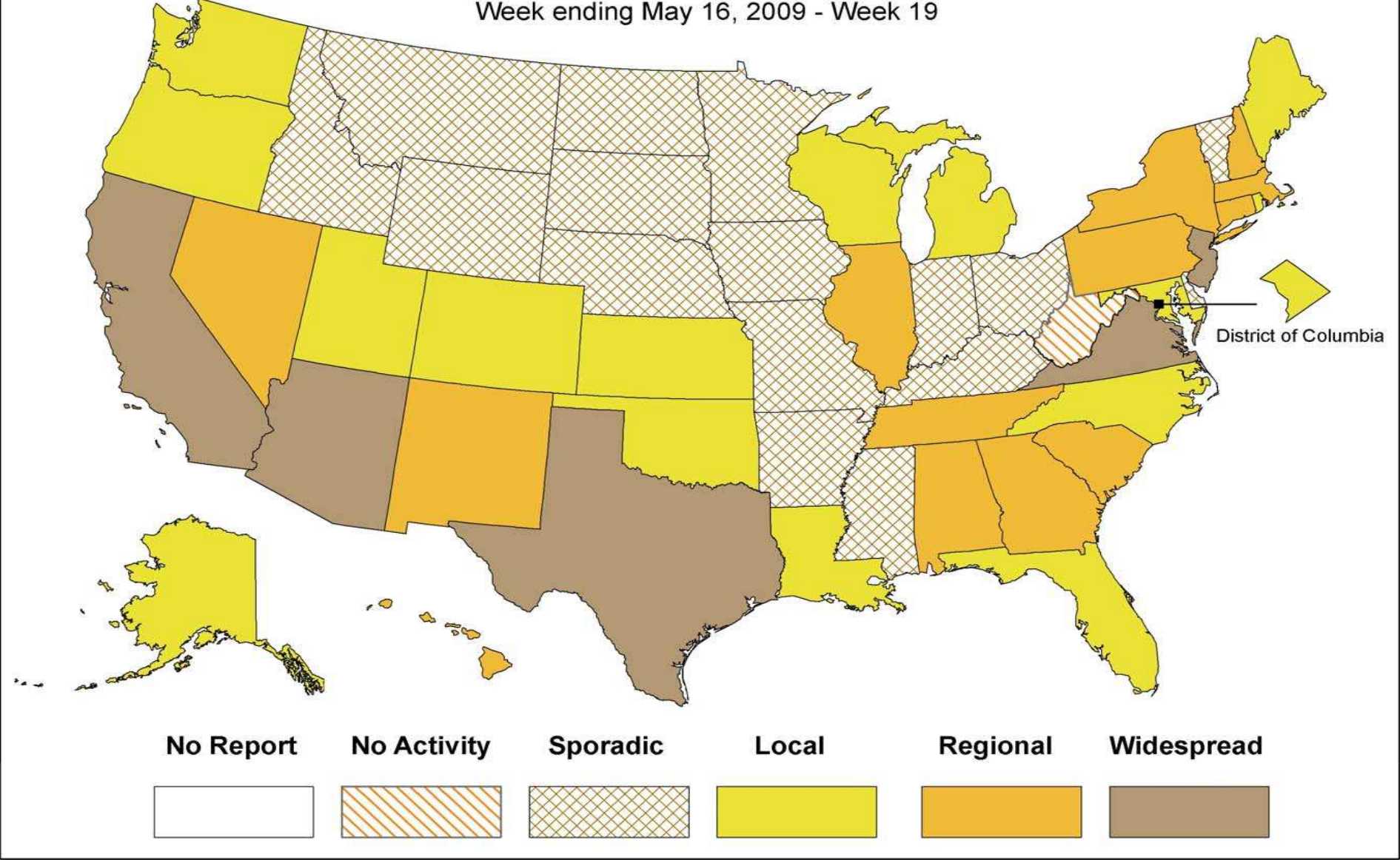


NOTE: Scales differ between regions

NOTE: There was no week 53 during the 2006-07 and 2007-08 seasons, therefore the week 53 data point for those seasons is an average of weeks 52 and 1.

Weekly Influenza Activity Estimates Reported by State & Territorial Epidemiologists*

Week ending May 16, 2009 - Week 19



* This map indicates geographic spread & does not measure the severity of influenza activity

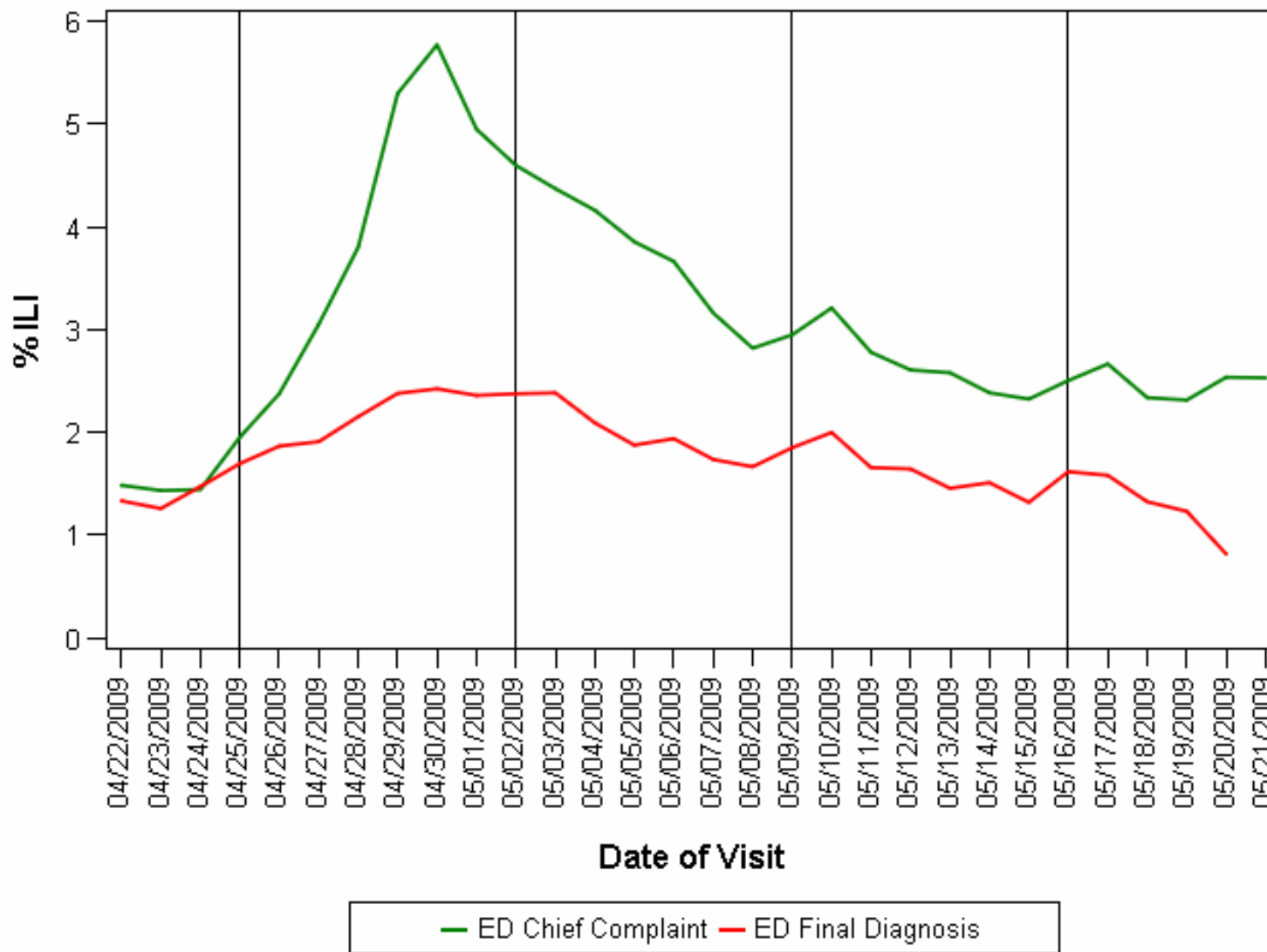


BioSense



Percentage of Emergency Department (ED) Chief Complaint Visits for ILI and ED Final Diagnosis Visits with ICD-9-CM codes for Influenza or ILI. U.S.

04/22/2009 to 05/21/2009

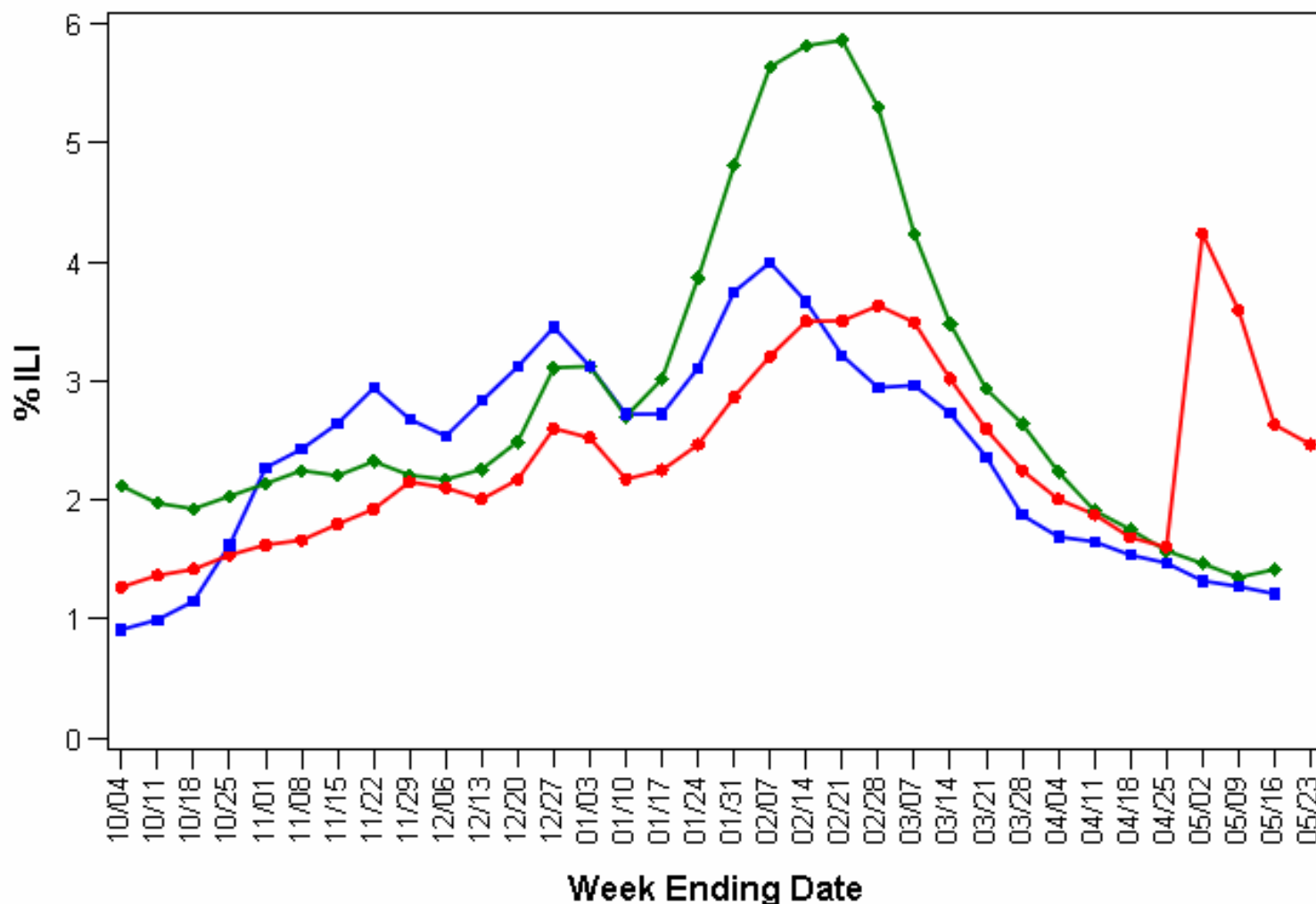




BioSense

Percentage Emergency Department Visits for Patient-reported ILI, Weekly Trends. U.S.

10/07/2006 to 05/23/2009*

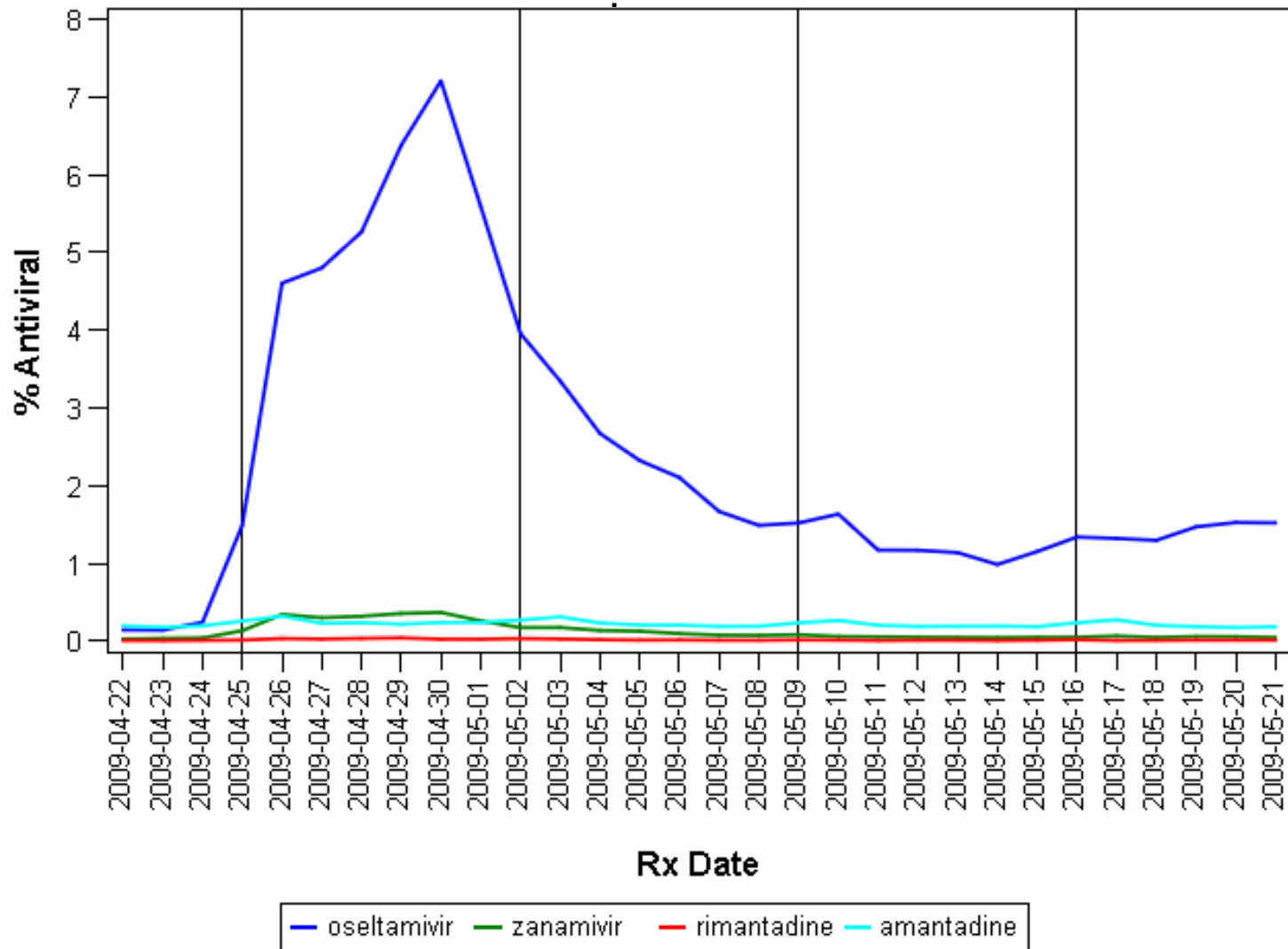


Season ■ 2006-2007 ◆ 2007-2008 ● 2008-2009

* Note: Week ending 05/23/2009 includes data from 05/17/2009 to 05/21/2009 only



BioSense Pharmacies Percentage of Anti-infective Prescriptions for Antivirals, U.S. 04/22/2009 to 05/21/2009





International
Novel Influenza A (H1N1) - 25 May 2009



- WHO global case count: 12,022 confirmed cases in 43 countries*
 - New countries with confirmed cases: Russia
 - Countries with highest confirmed case count after the US and Mexico:
 - Canada: 719 (=)
 - Japan: 321 (↑27 in last 72 hours)
 - Spain: 126 (↑13 in last 72 hours)
 - UK: 117 (↑5 in last 72 hours)

*Note: WHO case counts are current as of 05/24/09, 10:00 pm EDT



Division of Global Migration and Quarantine
Novel Influenza A (H1N1) - 25 May 2009
School Dismissal, United States, 4/29 – 5/22, 2009



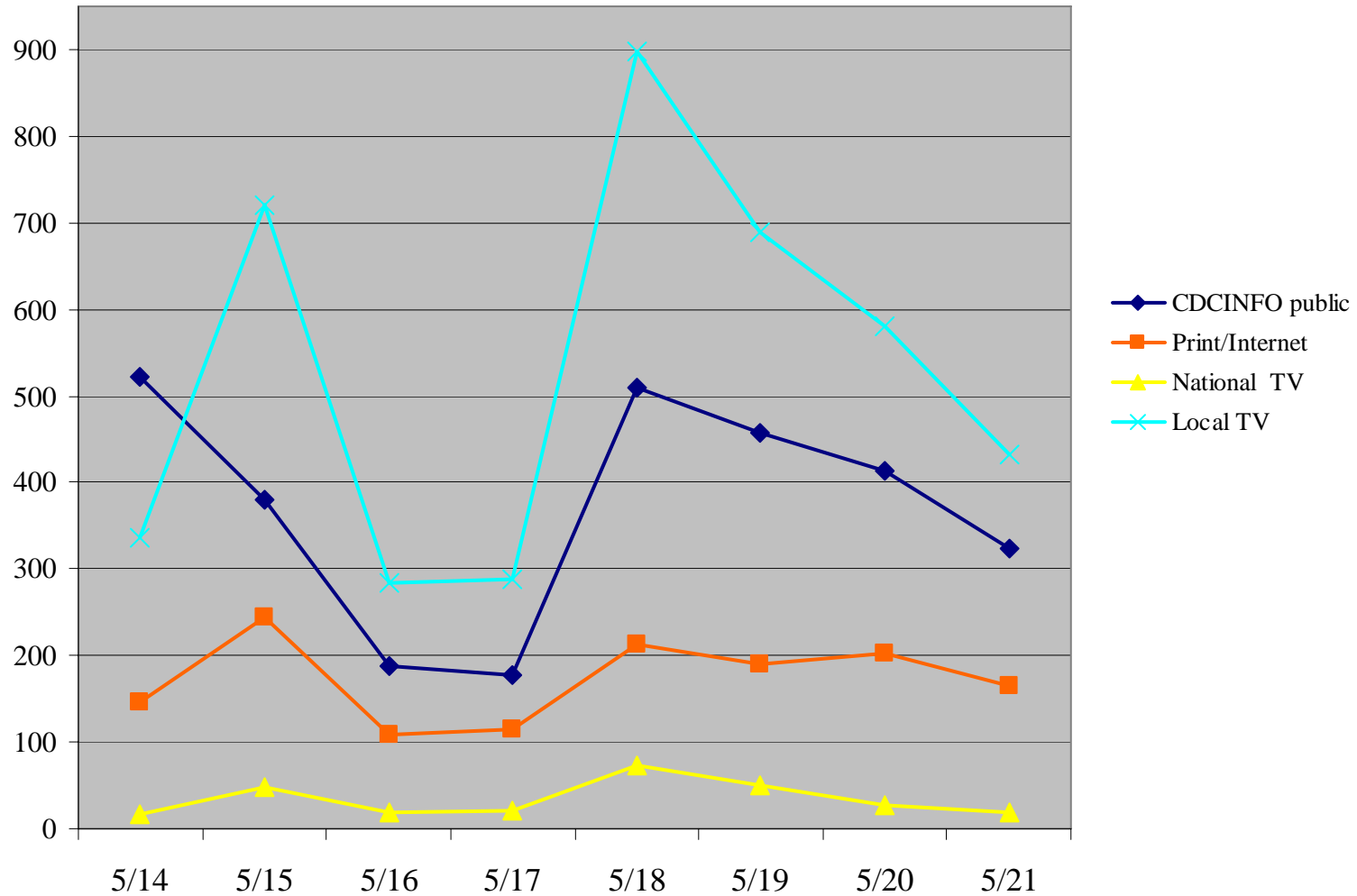
- School Dismissal
 - 78 schools closed due to H1N1 in 7 states (as of 12 noon, 22 May 2009):
 - Increase from 60 schools on 21 May
 - AZ, MA (12), MI, NJ, NY (47), TX, and WI.
 - Closures impacted 49,893 (increase from 42,052 on 21 May)
 - Closures appear to be in response to high absenteeism



Communications Summary Novel Influenza A (H1N1) – 25 MAY 2009



H1N1 Communication Channel Activity





Communications Summary Novel Influenza A (H1N1) – 25 MAY 2009



CDCINFO General Public Questions by Category 5/11-5/22

